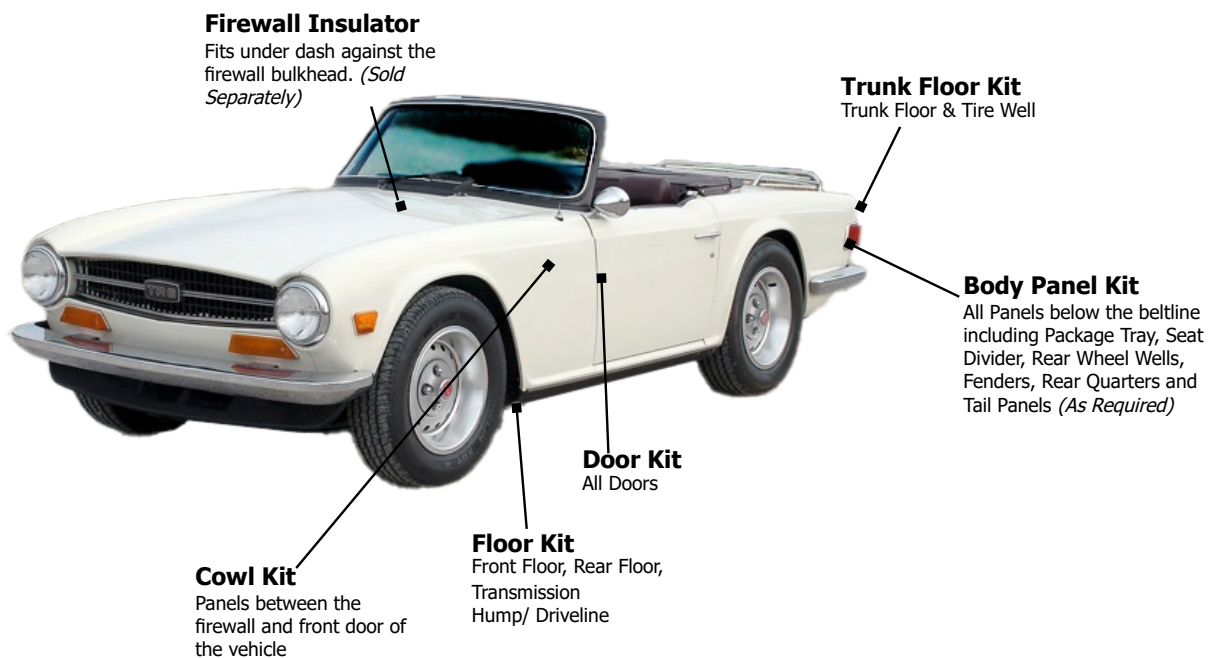


Roof to Road Solutions to Control Automotive Noise, Vibration and Heat

- Reduce Road Noise
- Reduce Exhaust Harmonics
- Eliminate Mechanical Noise
- Stop Body Panel Vibration
- Reduce Radiated & Reflected Heat
- Stop Audio System Vibration

## Pre-Cut Ready to Install Kits Year • Make • Model Specific

The Coolest Cars Have QuietRIDE Inside!™



Order On-line

### Everything in One Box to Do the Job Right!

Pre-Cut, Ready To install Kits are Year, Make and Model Specific and include:

- AcoustiShield Damper Pads
- Heat Shield Barrier Insulation
- Spray Adhesive •Seam Tape •Illustrated Instructions



Order Line: 888-777-3410  
Tech Line: 209-942-4777  
3183 HWY 71 S, Mena, AR 71953

For more information contact us at: [info@quietride.com](mailto:info@quietride.com)

©2003-2024 •Prices Subject to Change Without Notice



# Triumph 1964-77

Pre-Cut Kits Ready to Install

## Roof to Road Solutions to Control Automotive Noise, Vibration and Heat

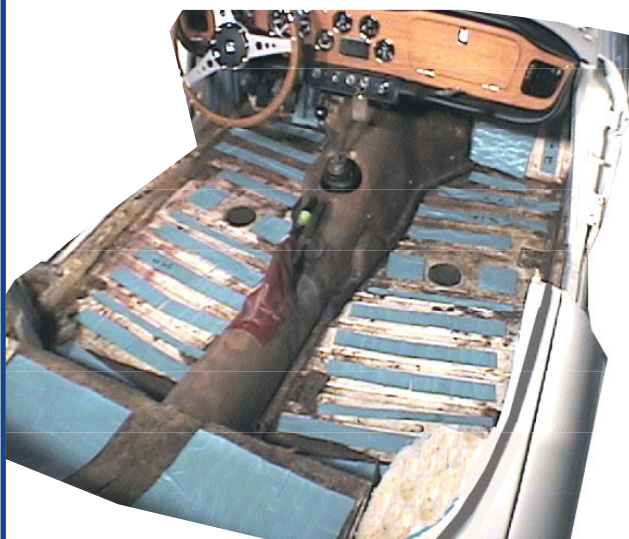
Introducing a multi-stage, automotive insulation and sound damping system to give Triumph the "quiet riding comfort" found in today's new cars. AcoustiSHIELD kits are designed on current "state-of-the-art" auto acoustic technology, to insulate and control the noise, vibration and heat in the passenger cabin. Kits are pre-cut and come with easy-to-follow installation instructions- everything you need to do the job right.



## Turn Your Triumph into "Quiet Riding Comfort"

### Stage 1

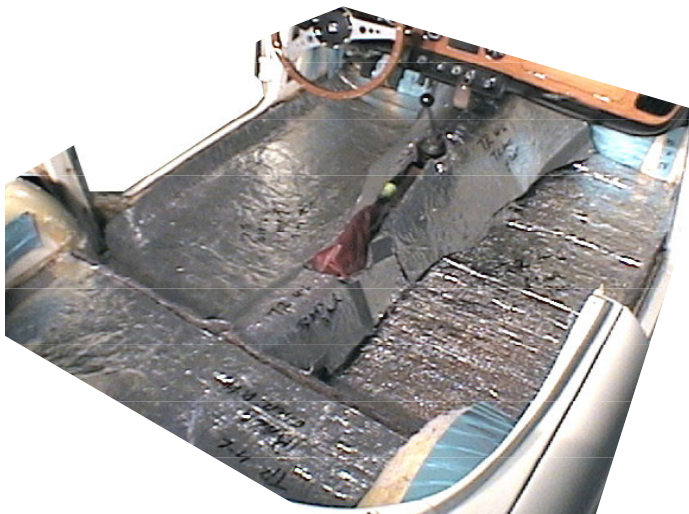
Sound Damper Pads



The first stage consists of pre-trimmed, self-adhesive, Sound Damper Pads, bonded to strategically located trouble spots on the floor pan and roof of the vehicle to control body panel vibration and noise. These spots are mapped and labeled in detailed instructions which are included in the kit.

### Stage 2

Heat Absorber/Barrier Panels



The second stage uses a high-tech absorber/barrier material, bonded to the body panels, to both sound deaden and insulate the vehicle from radiant heat penetration from the engine and road. Each absorber panel is cut to the correct shape and contour and is mapped and labeled in the detailed instructions.

#### Kits Include:

- **Stage 1** Pre-Sized Sound Damper Pads
- **Stage 2** Pre-Trimmed Heat Absorber / Barrier Panels, Spray Adhesive and Sealing Tape
- **Complete Illustrated Installation Instruction**

Dealer program available. For more information contact us at [info@quietride.com](mailto:info@quietride.com)

©2003-24 Quiet Ride Solutions Prices Subject to Change Without Notice



Order Line: 888-777-3410

Tech Line: 209-942-4777

3183 HWY 71 S, Mena, AR 71953

# Triumph

## AcoustiSHIELD®

Pre-Cut Kits Ready to Install

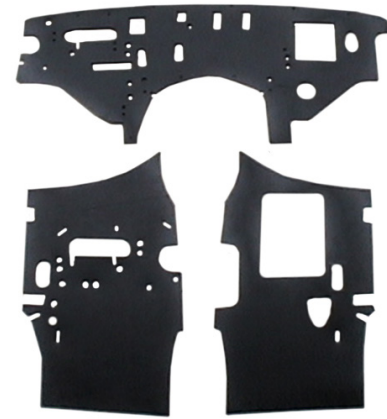
### Product Application Codes and Price Sheet

#### Triumph TR4 and TR6 Convertible

TR4/6 6476-CVAK	1964-1976 Triumph 4/6 Convert Complete Kit	611.80
TR4/66476-CVBPk	1964-1976 Triumph 4/6 Body Panel Kit	109.25
TR4/66476-CVCFK	1964-1976 Triumph Firewall/Cowl Kit	157.55
TR4/6 6476-CVFK	1964-1976 Triumph 4/6 Floor Kit	202.40
TR4/6 6476-CVTK	1964-1976 Triumph 4/6 Trunk Kit	109.25
ASU-DDBIK-2	Universal 2 Door Damper Kit	77.05

#### Other Triumph Parts Available:

TRI 7077-C	1970-1977 Triumph Stag Firewall Insulator-High Def Rubber	220.80
------------	---	--------



1970-1977 Triumph Stag Firewall

Cowl/Firewall	Floor Kit	Body Kit	Trunk Kit
<div>1</div>	<div>1</div>	<div>1</div>	<div>1</div>
<div>2</div>	<div>2</div>	<div>2</div>	<div>2</div>





## Automotive Thermal Acoustic Insulation



## A Roof to Road Solution to Control Passenger Cabin Noise, Vibration and Heat™

### AcoustiSHIELD Product Description

AcoustiShield is a two-stage thermal acoustic automotive insulation product designed to control Noise, Vibration and Heat—the three major issues that affect passenger cabin comfort. Kits include pre-cut, ready-to-install AcoustiShield damper pads and HeatShield Barrier Insulation panels which are packaged separately for easy installation. Kits come with uniquely illustrated installation sheets, spray adhesive and seam tape.



Complete Acoustic Kits insulate the Cowl, Floor, Roof, Trunk Floor, Doors and Body Panels, which includes the seat divider, package tray and rear wheel wells. The installation of a complete AcoustiShield kit typically will reduce passenger cabin noise by 12 to 17 decibels. To put this in perspective, a 10-decibel reduction is a 50 percent reduction in noise that the human ear can easily detect. Barrier insulation will reduce radiant heat by as much as 25 degrees.

### AcoustiShield is a Two-Stage Process

Stage-One of the AcoustiShield process is the application of small pre-cut AcoustiShield damper pads and strips to auto body sheet metal to greatly reduce the vibration and noise produced by these panels from entering the passenger cabin.

Stage-Two of the AcoustiShield process is the application of pre-cut HeatShield Barrier Insulation panels to the auto body sheet metal to encapsulate any remaining vibration/noise and to thermally insulate the vehicle.

©2003-24 Quiet Ride Solutions LLC.

"AcoustiSHIELD" "QuietRideSolutions" "AcoustiTRUNK" "AcoustiHOOD" are Registered Trademarks of Quiet Ride Solutions LLC.



**WARNING**  
Cancer and  
Reproductive Harm  
[www.p65Warnings.ca.gov](http://www.p65Warnings.ca.gov)

## Expanded NVH Reference Information:

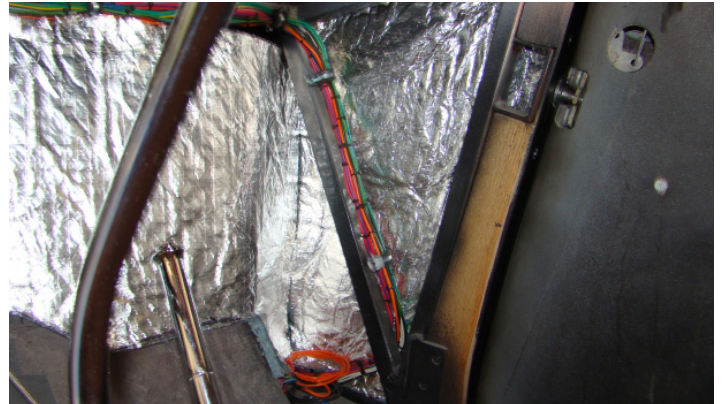
Cars and trucks make and/or absorb noise, vibration and heat (NVH) from multiple directions-including internal and external air-borne noise, structure-borne noise as well as radiant heat. NVH factors to consider:

- Engine NVH travels back from the front of the vehicle through the firewall and cowl.
- Wheel well trunk and rear body panel NVH travels forward through the seat divider and package tray panels.
- Roadway radiant heat, often exceeding 140 degrees, rises through vehicle floor pans.
- Rumbling performance exhaust systems and transmission/drive line harmonics also rise through vehicle floor pans.
- Direct heat from the sun penetrates the roof of the vehicle.

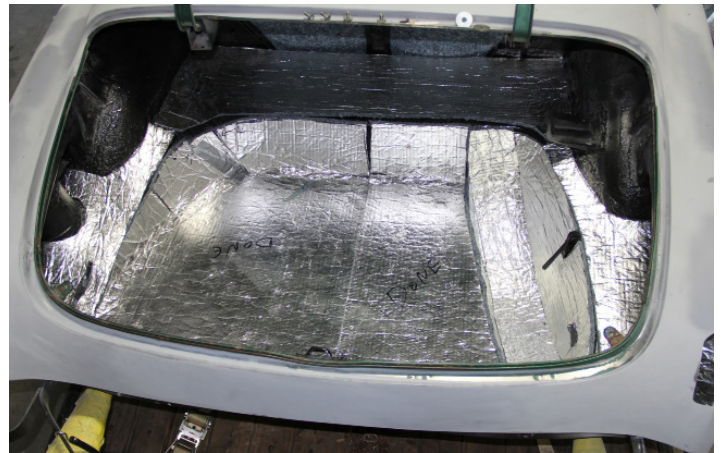
All of these influences “Apex” in the middle of the passenger cabin at ear level.

Add the noise produced by the sound system; the air rushing through the vents from the HVAC system; and a normal conversation builds into a “shouting match” between the driver and passenger to overcome the “harmonic drone” of vehicle mechanics.

## AcoustiShield Photo Gallery



Typical Cowl Panel Sound Dampening and Thermal Barrier Insulation



Typical Trunk Floor Sound Dampening and Thermal Barrier Insulation





Typical Floor Panel Sound Dampening and Thermal Barrier Insulation



Typical Roof Panel Sound Dampening and Thermal Barrier Insulation



Typical Body Panel Sound Dampening and Thermal Barrier Insulation





# Firewall INSULATORS™

**Stop Engine Heat at the Source**

Made Right-Fit Right-Look Right  
OEM Original Products



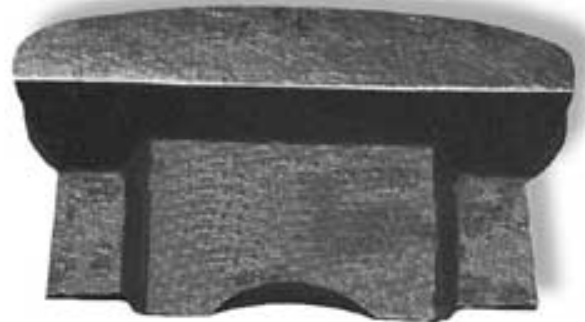
ABS Leather Grain Material

Firewall Insulator products are pre-cut and ready to install with standard OEM accessory and mounting holes punched for restoration applications. Each unit has period correct insulation.

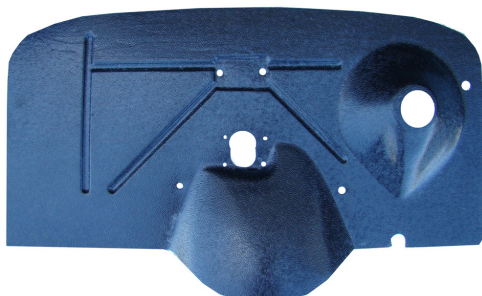
Firewall Insulators are also available without holes for aftermarket HVAC systems and Street Rod and Custom installs.



"Ultra High Definition"  
Vinyl Rubber



Street Rod Firewall Insulator  
Direct Sheetmetal  
Absolute Sheetmetal



ABS "Chicken Track" Material



## Product Description—

### “Ultra High Definition Vinyl Rubber”

## Original Equipment Firewall Insulators

## for General Motors Cars and Ford Cars and Trucks

Production Period—GM: 1964 to present

Production Period—FOMOCO: 1964 to present

FOMOCO and General Motors began using a rubber based firewall material in 1964 with the introduction of the Mustang, Chevelle family and Camaro Cars. Quiet Ride molds these products using a “Ultra High Definition” vinyl rubber. It comes ready to install with a Heat Shield Thermal Barrier insulation pad. Factory stock accessory holes and mounting pin locations are punched.

Kits include appropriate period mounting pins.



Each insulator product is molded from an “out of the car” original firewall for contour and accuracy.  
Year-Make-Model Specific.

Firewall Insulators can be ordered without holes for custom applications.



# Thermal Insulation Types

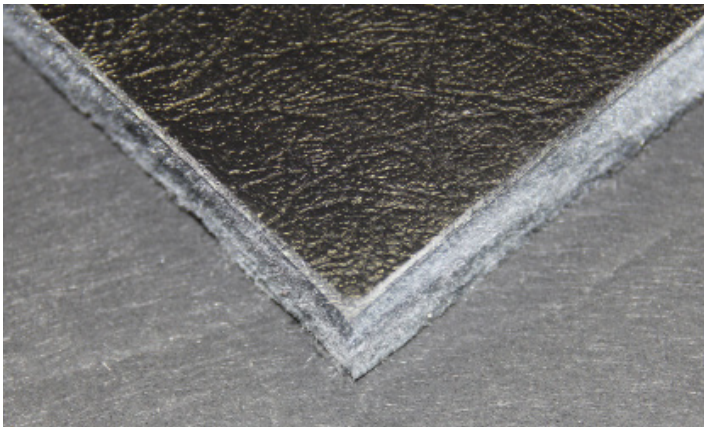
## Original Equipment Firewall Insulators

- General Motors Cars and Trucks
- Ford Cars and Trucks
- MOPAR Cars and Trucks

### Black Fiberglass Insulation

Typically used in vehicles 1949 through 1977

- ABS Firewall Insulators

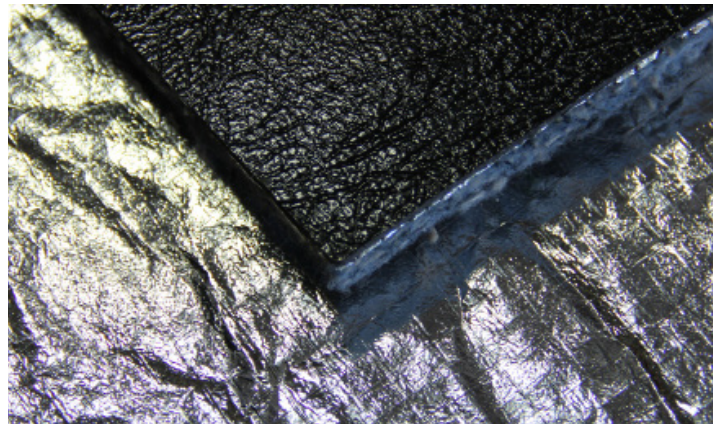


### Heat Shield Barrier Insulation

Typically used in vehicles 1928-48 and

Vinyl Rubber Firewalls 1964-present

- Street Rods
- Custom Firewalls



## Concours Show Quality

Authentically Correct • “Fit like a Glove” • Easy to Install

All QRS Products, Materials and Craftsmanship  
Meet or Exceed OEM Quality Standards

No customer has ever reported losing judged points on our firewall products.

# Firewall Insulators-A Historical Perspective

The Firewall Insulator is the first line of defense against automotive Noise, Vibration and Heat that is generated in the engine bay of the vehicle.

QRS manufactures more than 600 firewall products for antique, classic, custom and street rod cars and trucks. The company has developed these products based on "out of car" original insulator pads that have been supplied by its customers. QuietRide Firewalls Insulators are exact reproductions of OEM products.

Most firewall insulators made between 1928 and the mid-1960s were constructed with an oil impregnated cardboard cover in combination with a number of insulation materials. In 1964 General Motors and Ford Motor Company began using a "spray-on" rubber material bonded to a thin layer of "shoddy" insulation.

All of the company's firewall products are vacuum form molded to fit the firewall and transmission contours exactly. They are digitized and manufactured on its Flow Water Jet Cutting System for accurate fitting. Each firewall cover is backed with period correct insulation which could include a black fiberglass or HeatShield barrier insulation.

## Firewall Colors and "Sheen"

Just a word about the "look" of your old firewall in comparison to a new one-you may note that the new firewall does not look the same as your original-because of the "sheen." The firewall insulator in a car built in the 1930s or 40s is now at least 70-80 years old and is dirty and dingy. When the vehicle came off the assembly line, all of its component parts were crisp, clean and sparkling fresh.

With few exceptions, firewall insulators were black when they came from the factory. There were some exceptions in the General Motors product line from 1933 through 1941 in which the firewall insulators were a "mocha brown" color. The firewall color would typically match the color of your clutch, brake and accelerator pedal rubber pads.



3183 Hwy 71 S, Mena, AR 71953

Order Line: 888-777-3410

Tech Line (209) 942-4777

©2003-24 Quiet Ride Solutions LLC.

"AcoustiSHIELD""QuietRideSolutions""AcoustiTRUNK""AcoustiHOOD"areRegisteredTrademarksofQuietRideSolutions LLC.