



Street Rod Firewall Insulators
Absolute Sheetmetal, Direct Sheetmetal,
Dearborn, Poliform, BeBopp, New Age,
RodBods, Denver Deuce, Speed 33,
Wescott, Coast to Coast/Wildrod

Firewall INSULATORS™

Stop Engine Heat at the Source



Your first line of defense against engine noise, vibration and heat is the Firewall Insulator panel—it is the barrier between the engine bay and the passenger cabin. Quiet Ride Firewall Insulators fit like a glove because they match the contour of the stock steel firewall. There are no gaps to allow noise and heat to move into the passenger cabin.

All of our firewall insulator panels are manufactured from original panels that customers have allowed us to use over the last 30 years. Each panel is molded from a leather-grained ABS material and vacuum formed from our own mold to exact OEM factory specifications. Trim welts and rubber carpets skirts are sewn as required. A neoprene rubber is used for late model vehicles to meet factory specifications.

Custom Firewalls*

If you are building a "restomod" or custom vehicle, any of our firewall insulator products can be ordered with Heat Shield insulation and without holes for that "smoothie" look. Custom firewall panels can be installed with contact adhesive or by using our Street Rod Firewall Mounting Pin Kit.

Restoration Firewalls*

Firewalls are cut and punched with standard factory holes and are shipped ready-to-install with the appropriate "period" insulation attached. Save and reuse your original mounting pins. Universal pins are available should you need them.

***Technical Note:** If you have changed the OEM firewall (aside from welding up the mounting and equipment pass-through holes) you may have to look for alternative solutions. Call for suggestions and information.

Order On-line

Molded to fit over the transmission hump and into heater wells, using the highest quality materials available.

Dealer program available. For more information contact us at **"info@quietride.com"**

©2003-24 Quiet Ride Solutions Prices Subject to Change Without Notice



Quiet RIDE Solutions®

Order Line: **888-777-3410**

Tech Line: **209-942-4777**

3183 Hwy 71 S, Mena, AR 71953

Street Rod Firewall/INSULATORS™

Product Application Codes and Price Sheet

Absolute Sheetmetal Products-Ford Cars

BIT 2829SBF-CT4	1928-1929 Bitchin Ford Car Sml. Block Firewall 4" Setbk	286.35
BIT 3031BBF-CT4	1930-1931 Bitchin Ford Car Big Block Firewall 4.5" Setbk	286.35
BIT 3031SBF-CT2	1930-1931 Bitchin Ford Car Sml. Block Firewall 2.5" Setbk	286.35
BIT 3200BBF-C5	1932 Bitchin Ford Car Big Block Firewall 5" Setbk	286.35
BIT 3200SBF-C3	1932 Bitchin Ford Car Sml. Block Firewall -3" Setbk	286.35
BIT 3334BBF-C5	1933-1934 Bitchin Ford Car Big Block Firewall 5" Setbk	286.35
BIT 3334SBF-C3	1933-1934 Bitchin Ford Car Sml. Block Firewall -3" Setbk	286.35
BIT 3536BBF-C5	1935-1936 Bitchin Ford Car Big Block Firewall 5" Setbk	286.35
BIT 3536SBF-C3	1935-1936 Bitchin Ford Car Sml. Block Firewall -3" Setbk	286.35
BIT 3740BBC-C4	1937-1940 Bitchin Chevy Car Big Block Firewall 4" Setbk	286.35
BIT 3740BBF-C5	1937-1940 Bitchin Ford Car Big Block Firewall 5" Setbk	286.35
BIT 4148BBF-C4	1941-1948 Bitchin Ford Car Big Block Firewall 4" Setbk	286.35
BIT 4148SBF-C1	1941-1948 Bitchin Ford Car Sml. Block Firewall	286.35

Absolute Sheetmetal Products-Ford Trucks

BIT 2829SBF-CT4	1928-1929 Bitchin Ford Car Sml. Block Firewall 4" Setbk	286.35
BIT 3031BBF-CT4	1930-1931 Bitchin Ford Car Big Block Firewall 4.5" Setbk	286.35
BIT 3031SBF-CT2	1930-1931 Bitchin Ford Car Sml. Block Firewall 2.5" Setbk	286.35
BIT 3334BBF-T	1933-1934 Bitchin Ford Truck Big Block Firewall	286.35
BIT 3334SBF-T	1933-1934 Bitchin Ford Truck Sml. Block Firewall	286.35
BIT 3539SBF-T3	1935-1939 Bitchin Ford Truck Sml. Block Firewall -3" Setbk	286.35
BIT 4047SBF-T2	1940-1947 Bitchin Ford Truck Sml. Block Firewall	286.35
BIT 4852BBF-T	1948-1952 Bitchin Ford Truck Big Block Firewall	286.35
BIT 4852SBF-T	1948-1952 Bitchin Ford Truck Sml. Block Firewall	286.35

Absolute Sheetmetal Products-Chevrolet Cars

BIT 3740SBC-C2	1937-1940 Bitchin Chevy Car Sml. Block Firewall 2" Setbk	286.35
BIT 3740BBC-C4	1937-1940 Bitchin Chevy Car Big Block Firewall 4" Setbk	286.35
BIT 4148BBC-C4	1941-1948 Bitchin Chevy Car Big Block Firewall 4" Setbk	286.35
BIT 4148SBC-C2	1941-1948 Bitchin Chevy Car Sml. Block Firewall 2" Setbk	286.35

Absolute Sheetmetal Products-Chevrolet Trucks

BIT 4754SBC-T3	1947-1954 Bitchin Chevrolet Truck Sml. Block Firewall 3" Setbk	286.35
----------------	--	--------

Direct Sheetmetal-Ford Cars

DS2829SBF-CT4	1928-29 Direct Shtmetal Ford Car Sml. Block Firewall 4" setbk	286.35
DS3031BBF-CT5	1930-31 Direct Shtmetal Ford Car Big Block Firewall 5" setbk	286.35
DS3031SBF-CT3	1930-31 Direct Shtmetal Ford Car Sml. Block Firewall 3" setbk	286.35
DS 3200BBF-C	1932 Direct Shtmetal Ford Car Big Block Firewall	286.35
DS 3200SBF-C	1932 Direct Shtmetal Ford Car Sml. Block Firewall	286.35
DS 3334BBF-C5	1933-34 Direct Shtmetal Ford Car Big Block Firewall 5" Setbk	286.35

DS 3334SBF-C3	1933-34 Direct Shtmetal Ford Car Sml. Block Firewall -3" Setbk	286.35
DS 3536BBF-C5	1935-36 Direct Shtmetal Ford Car Big Block Firewall 5" Setbk	286.35
DS 3536SBF-C3	1935-36 Direct Shtmetal Ford Car Small Block Firewall 3" Setbk	286.35
DS 3740BBF-C5	1937-40 Direct Shtmetal Ford Car Big Block Firewall 5" Setbk	286.35
DS 3740SBF-C3	1937-40 Direct Shtmetal Ford Car Sml. Block Firewall 3" Setbk	286.35
DS 4148BBF-C4	1941-48 Direct Shtmetal Ford Car Big Block Firewall 4" Setbk	286.35
DS 4148SBF-C2	1941-48 Direct Shtmetal Ford Car Sml. Block Firewall 2" Setbk	286.35

Direct Sheetmetal-Ford Trucks

DS2829SBF-CT4	1928-29 Direct Shtmetal Ford Car Sml. Block Firewall 4" Setbk	286.35
DS3031BBF-CT5	1930-31 Direct Shtmetal Ford Car Big Block Firewall 5" Setbk	286.35
DS3031SBF-CT3	1930-31 Direct Shtmetal Ford Car Sml. Block Firewall 3" Setbk	286.35
DS 3334BBF-T	1933-34 Direct Shtmetal Ford Truck Big Block Firewall	286.35
DS 3334SBF-T	1933-34 Direct Shtmetal Ford Truck Sml. Block Firewall	286.35
DS 3539SBF-T	1935-39 Direct Shtmetal Ford Truck Sml. Block Firewall	286.35
DS 4047SBF-T2	1940-47 Direct Shtmetal Ford Truck Sml. Block Firewall 2" Setbk	286.35
DS 4852SBF-T2	1948-52 Direct Shtmetal Ford Truck Sml. Block Firewall 2" Setbk	286.35
DS 5356-FT	1953-1956 Direct Shtmetal Ford Truck Firewall	286.35

Direct Sheetmetal-Chevrolet Cars

DS3536BBC-C4	1935-36 Direct Shtmetal Chevrolet Big Block Firewall 4" Setbk	286.35
DS3536SBC-C2	1935-36 Direct Shtmetal Chevy Car Sml. Block Firewall 2" Setbk	286.35
DS3740BBC-C4	1937-40 Direct Shtmetal Chevy Car Big Block Firewall 4" Setbk	286.35
DS3740SBC-C2	1937-40 Direct Shtmetal Chevy Car Sml. Block Firewall 2" Setbk	286.35
DS4148BBC-C4	1941-48 Direct Shtmetal Chevy Car Big Block Firewall 4" Setbk	286.35
DS4148SBC-C2	1941-48 Direct Shtmetal Chevy Car Sml. Block Firewall 2" Setbk	286.35
DS4954BBC-C4	1949-54 Direct Shtmetal Chevy Car Big Block Firewall 4" Setbk	286.35
DS5557BBC-C4	1955-57 Direct Shtmetal Chevy Car Big Block Firewall 4" Setbk	286.35

Direct Sheetmetal-Chevrolet Trucks

DS4754BBC-T5	1947-54 Direct Shtmetal Chevy Truck Big Block Firewall 5" Setbk	286.35
DS5559BBC-T4	1955-59 Direct Shtmetal Chevy Truck Big Block Firewall 4" Setbk	286.35

Direct Sheetmetal-Oldsmobile Cars

DS4954BBO-C4	1949-1954 Direct Shtmetal Olds Big Block Firewall 4" Setbk	286.35
--------------	--	--------

Direct Sheetmetal-Willys Cars and Trucks

DS3942BBW-CT4	1939-1942 Direct Shtmetal Willys Big Block Firewall 4" Setbk	286.35
---------------	--	--------

Firewall/INSULATORS**Product Application Codes and Price Sheet****Inventory # Description Price****Brookville Roadster**

BROOK 2829-CTO	1928-1929 Brookville Original Style Firewall	194.35
BROOK 2829-CT4	1928-1929 Brookville Firewall 4" Setbk	286.35
BROOK 3031-CTO	1930-1931 Brookville Original Style Firewall	194.35
BROOK 3031-CT4	1930-1931 Brookville Firewall	286.35
BROOK 3200-CTF	1932 Brookville Flat Firewall	194.35

BeBopp's Glass Works

BEBOPP 5600-T	1956 BeBopp Ford Truck Firewall	286.35
---------------	---------------------------------	--------

Duloux Cord

DULOUX 3700-C	1937 Duloux Cord Firewall	220.80
---------------	---------------------------	--------

Coast to Coast/Wildrod

COAST 3700-C	1937 Coast Coupe Firewall	190.90
WILD 3700-C	1937 Wildrod Firewall	190.90

Dearborn Deuce

DEAR 3200-C	1932 Dearborn Deuce Coupe Firewall	171.35
DEAR 3200-CV	1932 Dearborn Convert Firewall	171.35

Inventory # Description Price**New Age Motor Sports**

NAMS3200FORD-C	1932 Ford New Age Motor Sports Firewall	175.95
----------------	---	--------

Denver Deuce

DENDU 3200-C	1932 Denver Deuce Firewall	286.35
--------------	----------------------------	--------

Speed 33

SPEED 3300-C	Speed 33 Roadster Firewall	286.35
--------------	----------------------------	--------

Wescott Auto Restyling

WES 3200-C	1932 Wescott Ford Firewall	190.90
WES 3400CV8-C	1934 Wescott Ford/Chevrolet V8 Firewall	263.35
WES 3400FV8-C	1934 Wescott Ford V-8 Firewall	263.35



Stop Engine Heat at the Source

Made Right-Fit Right-Look Right
OEM Original Products



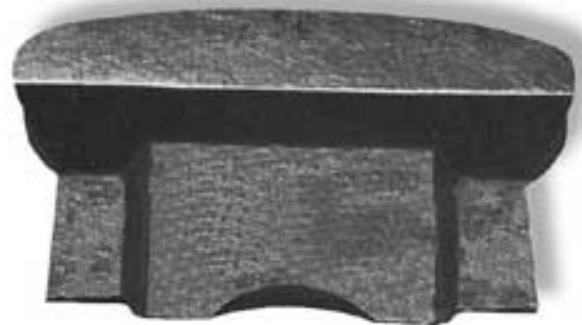
ABS Leather Grain Material

Firewall Insulator products are pre-cut and ready to install with standard OEM accessory and mounting holes punched for restoration applications. Each unit has period correct insulation.

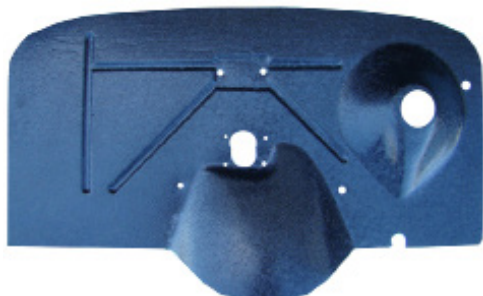
Firewall Insulators are also available without holes for aftermarket HVAC systems and Street Rod and Custom installs.



"Ultra High Definition"
Vinyl Rubber



Street Rod Firewall Insulator
Direct Sheetmetal
Absolute Sheetmetal



ABS "Chicken Track" Material

Quick Link



Product Description—

ABS “Chicken Track Grain”

Early Ford Original Equipment Firewall Insulators

Production Period—FOMOCO: 1928 through 1948

Production Period-Some Early Mopar Vehicles

FOMOCO cars and trucks used a unique “chicken track” texture on their firewall insulator covers from 1928 through 1948. Quiet Ride has faithfully reproduced this famous texture and offers it exclusively on its ABS molded firewall insulators. Each insulator product is molded with an ABS material and ready-to-install with Heat Shield Thermal Barrier insulation, factory stock accessory holes and mounting pin locations punched.

Ford style steel mounting pins are not included but are available for separate purchase as needed.

ABS Firewall Cover Chicken Track Grain Material



Each insulator product is molded from an “out of the car” original firewall for contour and accuracy.

Year-Make-Model Specific.

Firewall Insulators can be ordered without holes for custom applications.

Product Description—

ABS “Leather Grain” Original Equipment Firewall Insulators

Production Period—GM and MOPAR: 1926 through 1976

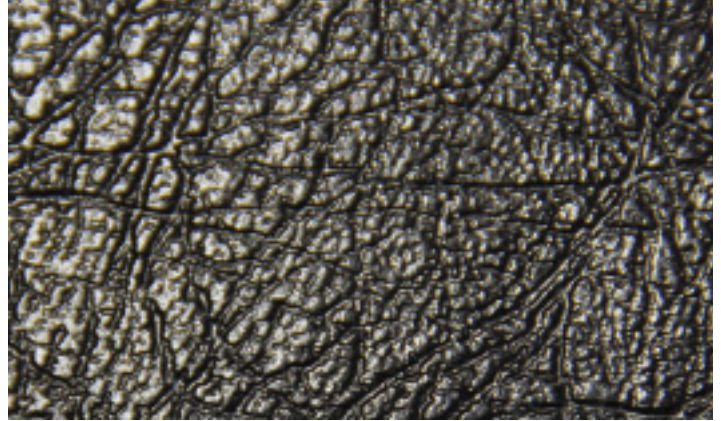
Production Period—FOMOCO: 1949 through 1979

Most OEMs used a leather grained firewall cover on their cars and trucks from 1926 through 1965. Each insulator product is molded with ABS material and ready-to-install with factory stock accessory holes and mounting pin locations punched.

Kits does not include mounting pins. Quiet Ride has an assortment of “universal” mounting pin styles available as needed.

Mounting pins are not included but are available for separate purchase as needed.

ABS Firewall Cover Leather Grain Material



Each insulator product is molded from an “out of the car” original firewall for contour and accuracy.

Year-Make-Model Specific.



MOPAR, JEEP, DODGE, HEMI, PLYMOUTH, RAM, SRT, CHRYSLER and related logos, vehicle model names and trade dress are trademarks of Chrysler Group LLC used under license by QuietRide Solutions LLC. © 2014 Chrysler Group LLC.

Firewall Insulators can be ordered without holes for custom applications.

Product Description—

“Ultra High Definition Vinyl Rubber”

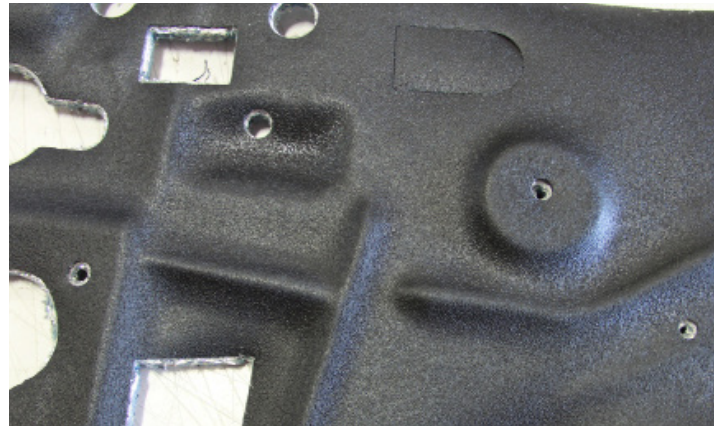
Original Equipment Firewall Insulators for General Motors Cars and Ford Cars and Trucks

Production Period—GM: 1964 to present

Production Period—FOMOCO: 1964 to present

FOMOCO and General Motors began using a rubber based firewall material in 1964 with the introduction of the Mustang, Chevelle family and Camaro Cars. Quiet Ride molds these products using a “Ultra High Definition” vinyl rubber. It comes ready to install with a Heat Shield Thermal Barrier insulation pad. Factory stock accessory holes and mounting pin locations are punched.

Kits include appropriate period mounting pins.



Each insulator product is molded from an “out of the car” original firewall for contour and accuracy.
Year-Make-Model Specific.

Firewall Insulators can be ordered without holes for custom applications.

Product Description—Street Rod Firewall Insulators

Direct Sheetmetal

Absolute Sheetmetal (formerly Bitchin Products)

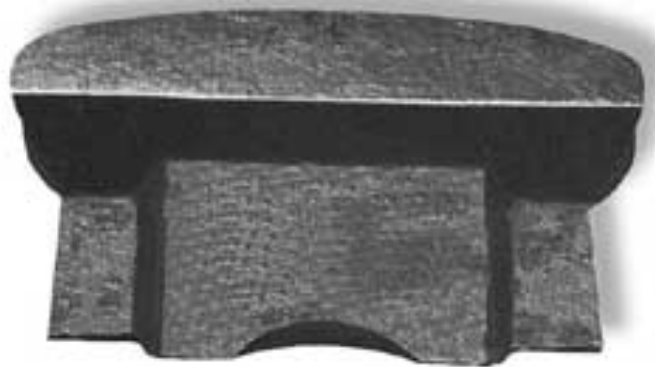
Production Period—FOMOCO: 1928 through 1956

Production Period-GM: 1936 through 1972

Street Rod Firewall Insulators are based on the steel after-market firewalls that are manufactured by Direct Sheetmetal and Absolute Sheetmetal (formerly Bitchin Products) to stop the heat and noise generated by large engine installed in smaller, older vehicles. Each insulator product is molded with ABS Leather grain material to fit the steel engine and transmission recess “like a glove.” All street rod products are year, make and model specific, and come ready to install with a double layer of Heat Shield Thermal Barrier insulation pad.

There are no mounting holes or accessory cut-outs so customers can achieve that “smooth” look in the engine bay and passenger compartment.

Customer must decide method of installation. Quiet Ride makes a Street Rod mounting pin kit, available separately.



Each Street Rod Firewall Insulator product is molded from a steel mold provided by the manufacturer to achieve contour and accuracy. Year-Make-Model Specific.

Thermal Insulation Types

Original Equipment Firewall Insulators

- General Motors Cars and Trucks
- Ford Cars and Trucks
- MOPAR Cars and Trucks

Black Fiberglass Insulation

Typically used in vehicles 1949 through 1977

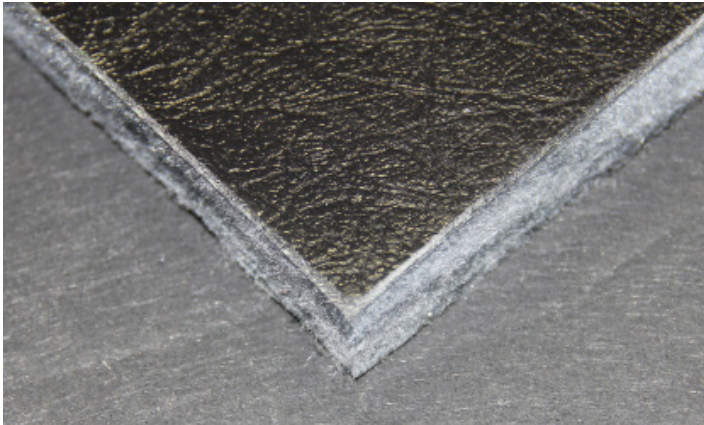
- ABS Firewall Insulators

Heat Shield Barrier Insulation

Typically used in vehicles 1928-48 and

Vinyl Rubber Firewalls 1964-present

- Street Rods
- Custom Firewalls



Concours Show Quality

Authentically Correct-"Fit like a Glove"-Easy to Install

All QRS Products, Materials and Craftsmanship
Meet or Exceed OEM Quality Standards

No customer has ever reported losing judged points on our firewall products.

Firewall Insulators-A Historical Perspective

The Firewall Insulator is the first line of defense against automotive Noise, Vibration and Heat that is generated in the engine bay of the vehicle.

QRS manufactures more than 600 firewall products for antique, classic, custom and street rod cars and trucks. The company has developed these products based on “out of car” original insulator pads that have been supplied by its customers. QuietRide Firewalls Insulators are exact reproductions of OEM products.

Most firewall insulators made between 1928 and the mid-1960s were constructed with an oil impregnated cardboard cover in combination with a number of insulation materials. In 1964 General Motors and Ford Motor Company began using a “spray-on” rubber material bonded to a thin layer of “shoddy” insulation.

All of the company’s firewall products are vacuum form molded to fit the firewall and transmission contours exactly. They are digitized and manufactured on its Flow Water Jet Cutting System for accurate fitting. Each firewall cover is backed with period correct insulation which could include a black fiberglass or HeatShield barrier insulation.

Firewall Colors and “Sheen”

Just a word about the “look” of your old firewall in comparison to a new one-you may note that the new firewall does not look the same as your original-because of the “sheen.” The firewall insulator in a car built in the 1930s or 40s is now at least 70-80 years old and is dirty and dingy. When the vehicle came off the assembly line, all of its component parts were crisp, clean and sparkling fresh.

With few exceptions, firewall insulators were black when they came from the factory. There were some exceptions in the General Motors product line from 1933 through 1941 in which the firewall insulators were a “mocha brown” color. The firewall color would typically match the color of your clutch, brake and accelerator pedal rubber pads.



3183 Hwy 71 S, Mena, AR 71953

Order Line: 888-777-3410

Tech Line (209) 942-4777

www.quietride.com

©2003-24 Quiet Ride Solutions LLC.

“AcoustiSHIELD” and “Quiet Ride Solutions” are Registered Trade Marks of Quiet Ride Solutions LLC.



AcoustiSHIELD®

Automotive Thermal Acoustic Insulation



A Roof to Road Solution to Control Passenger Cabin Noise, Vibration and Heat™

AcoustiSHIELD Product Description

AcoustiShield is a two-stage thermal acoustic automotive insulation product designed to control Noise, Vibration and Heat—the three major issues that affect passenger cabin comfort. Kits include pre-cut, ready-to-install AcoustiShield damper pads and HeatShield Barrier Insulation panels which are packaged separately for easy installation. Kits come with uniquely illustrated installation sheets, spray adhesive and seam tape.



Complete Acoustic Kits insulate the Cowl, Floor, Roof, Trunk Floor, Doors and Body Panels, which includes the seat divider, package tray and rear wheel wells. The installation of a complete AcoustiShield kit typically will reduce passenger cabin noise by 12 to 17 decibels. To put this in perspective, a 10-decibel reduction is a 50 percent reduction in noise that the human ear can easily detect. Barrier insulation will reduce radiant heat by as much as 25 degrees.

AcoustiShield is a Two-Stage Process

Stage-One of the AcoustiShield process is the application of small pre-cut AcoustiShield damper pads and strips to auto body sheet metal to greatly reduce the vibration and noise produced by these panels from entering the passenger cabin.

Stage-Two of the AcoustiShield process is the application of pre-cut HeatShield Barrier Insulation panels to the auto body sheet metal to encapsulate any remaining vibration/noise and to thermally insulate the vehicle.

Quick Link



Expanded NVH Reference Information:

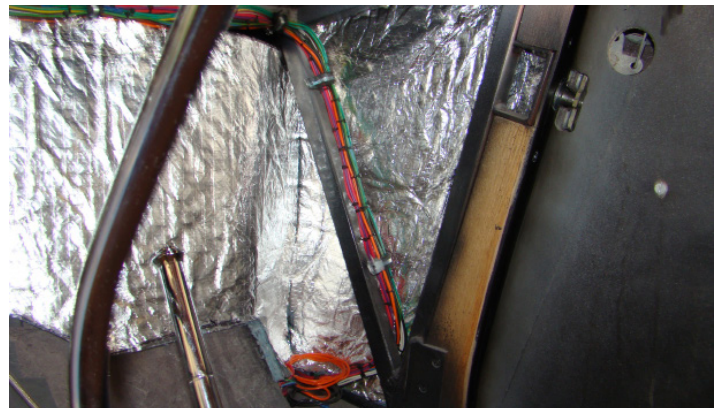
Cars and trucks make and/or absorb noise, vibration and heat (NVH) from multiple directions-including internal and external air-borne noise, structure-borne noise as well as radiant heat. NVH factors to consider:

- Engine NVH travels back from the front of the vehicle through the firewall and cowl.
- Wheel well trunk and rear body panel NVH travels forward through the seat divider and package tray panels.
- Roadway radiant heat, often exceeding 140 degrees, rises through vehicle floor pans.
- Rumbling performance exhaust systems and transmission/drive line harmonics also rise through vehicle floor pans.
- Direct heat from the sun penetrates the roof of the vehicle.

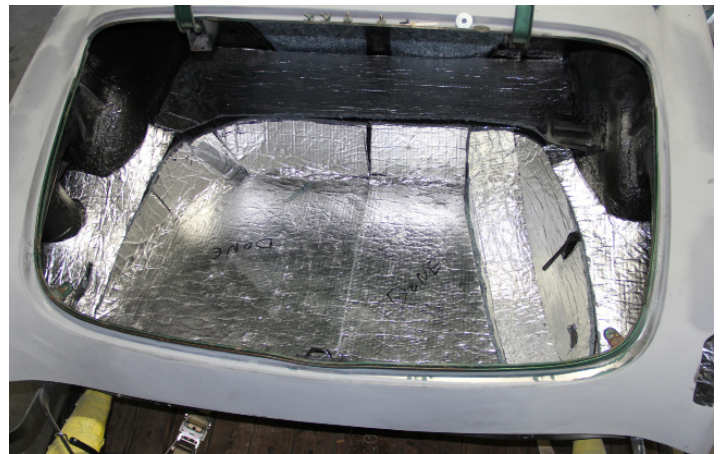
All of these influences “Apex” in the middle of the passenger cabin at ear level.

Add the noise produced by the sound system; the air rushing through the vents from the HVAC system; and a normal conversation builds into a “shouting match” between the driver and passenger to overcome the “harmonic drone” of vehicle mechanics.

AcoustiShield Photo Gallery



Typical Cowl Panel Sound Dampening and Thermal Barrier Insulation.



Typical Trunk Floor Sound Dampening and Thermal Barrier Insulation.



Typical Floor Panel Sound Dampening and Thermal Barrier Insulation.



Typical Roof Panel Sound Dampening and Thermal Barrier Insulation.



Typical Body Panel Sound Dampening and Thermal Barrier Insulation.



**AUTHENTIC
RESTORATION™
PRODUCT**

MOPAR, JEEP, DODGE, HEMI, PLYMOUTH, RAM, SRT, CHRYSLER and related logos, vehicle model names and trade dress are trademarks of Chrysler Group LLC used under license by QuietRide Solutions LLC. © 2014 Chrysler Group LLC.

Fasteners and Screws

Firewall Mounting Pin Options For Older Cars and Trucks

American Cars and Trucks used a wide variety of mounting pins, clips, buttons and screws to attach the firewall insulator to the interior of the steel firewall bulkhead. Clean up and reuse your original mounting pins if you have them. We offer the following mounting pins and information based on what we have been able to find available.

Early Ford Firewall Mounting Pins

These all steel firewall mounting pins are a reproduction of the originals. They are available in a 3/4 inch length (Long) and a 1/2 inch length (Short). The long pins work best for the early production cars and trucks. The Short pin works best for the 1942-48 cars and 1940-47 Trucks. The long pins may have been used in Ford cars as late as 1954. The short pins may have been used in Ford Trucks through the mid 1950s.

Ford 3541-MPL 1935-41 Ford Firewall Mounting Pin-Long \$3

Ford 4147-MPS 1941-47 Ford Firewall Mounting Pin-Short \$3



GM Firewall Mounting Plugs

General Motors started using a plastic firewall mounting plug to attach the insulator in the mid 1950s-1955 for Trucks and 1957 for Cars. These plugs are still used in GM vehicles today.

GM 5500-MP 1955 to Present General Motors Mounting Plug \$3



Street Rod Mounting Pins

With this new mounting pin kit, you can weld up your firewall mounting holes and install any of our insulators for that "smoothie look." Kit includes nine pin-sets and installation instructions.

SRMP Street Rod Firewall Mounting Pin Kit \$34



Universal Mounting Pins

If your original firewall mounting pins are missing or damaged beyond repair, these universal pins may be a solution. They are a plastic "Christmas tree" type pin that will fit most 5/16 inch holes. Kit includes 10 pins.

UMPS-10 Universal Mounting Pin Set \$20



Universal Wire Cap

A variety of car and truck manufacturers in the 1930s used a wire cap to retain the firewall insulator. These are still available in a Long (1/2 inch) and Short (1/4 inch) variety and have a 1/2 inch button head that can be painted. To match the firewall color.

UWC-MPL Universal Wire Cap Mounting Pin Long \$1

UWC-MPS Universal Wire Cap Mounting Pin Short \$1

